



Agilent PXI Multiplexer Switch Modules

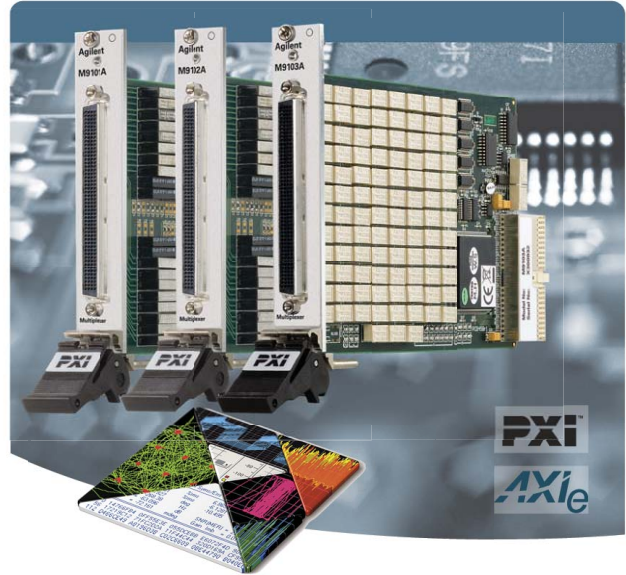
DISCOVER the Alternatives...

Industries and Applications

- Aerospace/defense
- Automotive
- Electronic test
- Medical
- Semiconductor

Product Description

The PXI multiplexer modules deliver high-speed signal routing of many different channels to a single point, and are ideal for routing multiple analog signals to a measurement device in automated test environments (ATE) or data acquisition systems.



Models	
M9101A	64-ch, 2-wire, reed relays
M9102A	128-ch, 1-wire, reed relays
M9103A	99-ch, 2-wire, armature relays

... Agilent **Modular** Products

Main Features and Benefits

Product features	Your benefit
High-speed, long-life reed relays or higher power EM relays	Get the performance you need with 500 usec switches or up to 60W per channel
Modules operate in break-before-make mode	Ensure no two points are connected at the same time
Up to 128 channels in a single module	Scan many points in a compact space
Software drivers support the most common programming environments	Work in your environment of choice and reduce development time
Optional connector block, soft front panels, and Agilent Connection Expert	Fast and easy installation and configuration

Specifications and Characteristics

Hardware	M9101A	M9102A	M9103A
Channels	64	128	99
Switch type	2-wire, reed	1-wire, reed	2-wire, armature
Max volts (CAT 1) (typ)	100Vrms		
Max switch/carry rating (typ)	0.5A/1.0A	0.5A/1.0A	1A
Max power (nom)	10W	10W	60W
Bandwidth (nom)	5 MHz	5 MHz	1 MHz
Connectors	200 LFH		

Chassis slot compatibility: cPCI (J1), PXI-1, PXIe Hybrid



Agilent Technologies

Software Information

Operating systems	Microsoft Windows® XP Microsoft Windows® Vista (32/64-bit) Microsoft Windows® 7 (32/64-bit)
Standard compliant drivers	IVI-COM, IVI-C, LabVIEW, MATLAB
Supported application development environments (ADE)	VisualStudio® (C/C++, C#, VB.NET), LabVIEW, LabWindows/CVI, MATLAB, VEE
Agilent IO Libraries	Includes: VISA Libraries, Agilent Connection Expert, IO Monitor

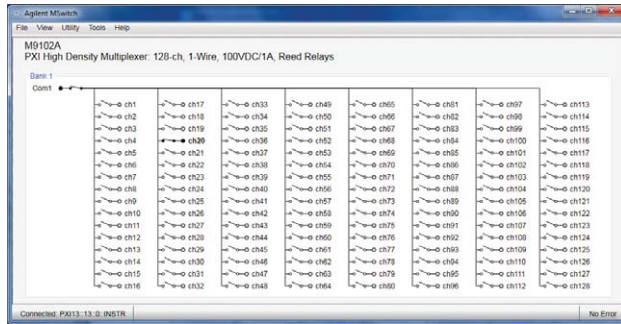


Figure 1. Soft front panel



Figure 2. PXI connector block

Microsoft Windows and Visual Studio are either registered trademarks or trademarks of Microsoft Corporation in the United States and/or other countries.
PCIe® is a registered U.S. trademark and/or service mark of PCI-SIG.

Ordering Information

Model	Description
M9101A	PXI high-density multiplexer: 64-ch, 2-wire, 100V/1.0A, reed relays
M9102A	PXI high-density multiplexer: 128-ch, 1-wire, 100Vrms/1.0A, reed relays
M9103A	PXI high-density multiplexer: 99-ch, 2-wire, 100Vrms/1A, armature relays

Related products	
M9018A	18-slot PXIe chassis
M9021A	PCIe® cable interface
M9132A	50-ch SPST general purpose switch
M9187A	32-ch digital I/O

Accessories	
Y1182A	PXI connector block: 200-pin, shielded, male (recommended)
Y1189A	PXI connector cable: 200-pin, male-to-female, 1Meter
Y1190A	PXI connector cable: 200-pin, male-to-female, 2Meter

Advantage Services: Warranty	
Agilent Advantage Services is committed to your success throughout your equipment's lifetime.	
R-51B-001-3C	1-year, return-to-Agilent warranty extended to 3 years

Discover Agilent ...

www.agilent.com
www.agilent.com/find/modular
www.agilent.com/find/pxi-switch
 USA: (800) 829-4444



For more information on Agilent Technologies' products, applications, or services, please contact your local Agilent office. The complete list is available at: www.agilent.com/find/contactus

Product specifications and descriptions in this document subject to change without notice.

© Agilent Technologies, Inc. 2011 Printed in USA, November 28, 2011
5990-6356EN